



PROPHECY

BY PRIORITY ONE SOLUTIONS



Finally, a diagnostic system designed around what is important – keeping the machine up and running!

Prophecy's high speed real-time data engine allows for unparalleled capabilities within a host of monitoring and diagnostics tools, each designed in close collaboration with maintenance staff from facilities around the world.

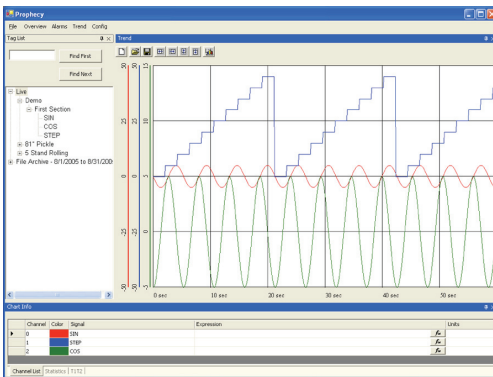
The componentized architecture allows infinite flexibility without custom coding. Connect multiple machines using various control systems with one cohesive diagnostic tool.

FLEXIBLE TRENDING

Prophecy is equipped with one of the most powerful trending interfaces on the market. Backed by the high-speed data acquisition engine, the trend interface allows you to see what you need when you need it. With Prophecy's data aggregation capabilities, you can view values from not only the machine you are at, but any other machine in the facility connected to the Prophecy system.

Interface

- Dockable, pinnable, minimizable windows allow you to configure the trend view to exactly what you need to look at.
- Display an unlimited number of consecutive "pens"
- Create pens based on expressions.
- Start trending a new value immediately with Prophecy's On-the-Fly trending!
- Create exportable trend snapshots based on a time or conditional trigger.



Data

- Configure different tags to be sampled at different rates—optimizing the system for what is most important.
- Store infinite amounts of trend data to an offline data server or data warehouse.
- Export data to popular file formats such as Access or Excel.
- Trend data is retained, even after a system restart
- Data can be collected based on a configurable condition with Prophecy's event driven data collection mechanism.
- Maximize disk utilization with built-in trend data compression.



Filter	Filter On User	History	Statistics	Acknowledge
FAULT_HIGH	11/7/2005 12:52:28	11/7/2005 12:52:28	11/7/2005 12:52:28	
LHMS_HORZ_REF	Left Hand Master Switch Reference Output			
FAULT_HIGH	11/7/2005 12:52:28	11/7/2005 12:52:28	11/7/2005 12:52:28	
L.AC.LINE	Luff Hoist AC line voltage (volts)			
FAULT_HIGH	11/7/2005 12:52:28	11/7/2005 12:52:28	11/7/2005 12:52:28	
L.ALM_FLT	Luff Hoist section alarm/fault register			
FAULT_HIGH	11/7/2005 12:52:28	11/7/2005 12:52:28	11/7/2005 12:52:28	
L.ANGLE_FB	Luff Angle Filtered Fdbk (90=90 deg)			
FAULT_HIGH	11/7/2005 12:52:28	11/7/2005 12:52:28	11/7/2005 12:52:28	
L.ARM_CUR	Luff Hoist arm. fb (amps*10)			
FAULT_HIGH	11/7/2005 12:52:28	11/7/2005 12:52:28	11/7/2005 12:52:28	
L.ARM_EMF	Luff Hoist counter emf feedback (volts)			
FAULT_HIGH	11/7/2005 12:52:28	11/7/2005 12:52:28	11/7/2005 12:52:28	
L.ARM_REF	Luff Hoist arm. ref (4095cnts=LIMBAR A)			
FAULT_HIGH	11/7/2005 12:52:28	11/7/2005 12:52:28	11/7/2005 12:52:28	
L.ARM_VOLT	Luff Hoist arm. voltage feedback (volts)			
FAULT_HIGH	11/7/2005 12:52:28	11/7/2005 12:52:28	11/7/2005 12:52:28	
L.CUSTOM_FLT1	Luff Hoist section custom fault register			
FAULT_HIGH	11/7/2005 12:52:28	11/7/2005 12:52:28	11/7/2005 12:52:28	
L.CUSTOM_FLT2	Luff Hoist section custom fault register			

EVENTS

Prophecy takes faults and alarms to a new level. Events can be easily configured from any input available to the system.

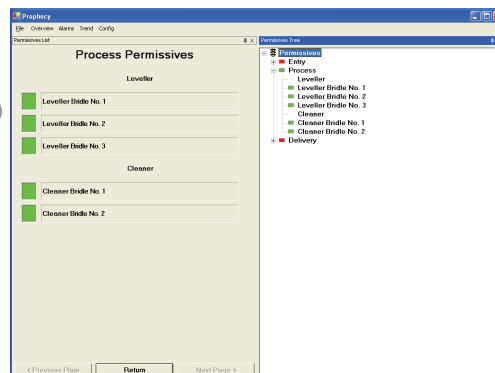
Want to be paged when an alarm is triggered? How about an email? Or would you prefer a text message on your cellular phone? Prophecy can be configured and programmed to behave in whatever manner required to keep you informed of what is going on.

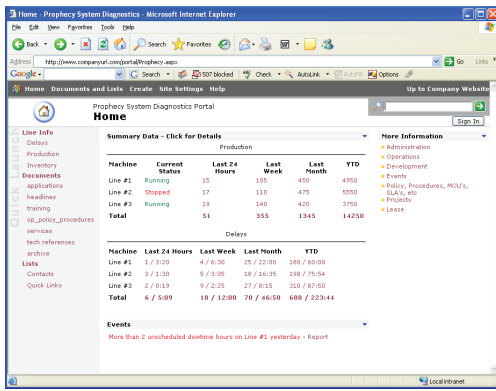
Prophecy also keeps track of event statistics. Ever wonder what the most problematic conditions are? See it now in living color with Prophecy!

DRILL-DOWN RELATIONAL PERMISSIVES

Identify un-met permissives quickly and easily with logical, drill-down style permissive lists or with the newer style tree view list, allowing you to see the parent-child relationships of any permissive group.

Also, view permissives that meet any user-definable criteria, regardless of how they are organized in the drill-down lists.





PROPHECY IS WEB READY

From the plant floor to the VP's office, Prophecy's web components harness the agility of the modern web browser to distribute the power of this versatile tool throughout your intranet.

Common applications of Prophecy's web components include:

- Prophecy data rendering—display any Prophecy data on the web
- Prophecy Summary Dashboard
- Powerful, dynamically linked report interface for product, shift, and uptime statistics

SPECIFICATIONS/ STATISTICS

Acquisition

- 10k tags @ 10ms (Note: at lower (e.g. 50ms) trend rates, substantially more than 10k tags can be stored.)
- Unlimited tag count
- Multiple trending rates are available (down to 1ms without special hardware, lower rates available)
- Multiple reduction rates are available for reduced data
- Historical data is retained after a server reboot (However, data is not collected during a reboot).

Storage

- Prophecy uses compression algorithms to maximize disk utilization.
- Local storage is dictated solely by disk space.
- External storage is supplied on a custom basis and can store as much data as required, typically 2 to 3 years. This solution also includes the ability to store data to removable media.

Hardware

Base Server/Client application runs on the Windows platform; recommended hardware is Pentium 4, 1GHz w/ 1 Gb RAM).

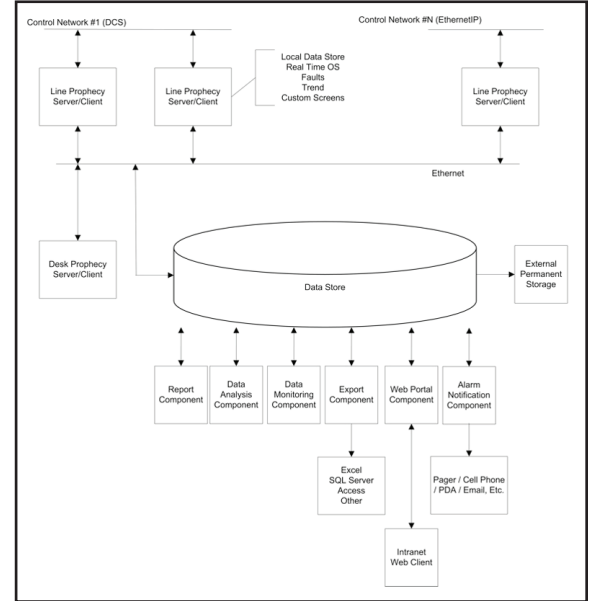
Data Analysis, External Infinite Data Store, and Data Monitoring hardware analysis is in progress, but is expected to be Windows Server Level.

Display

- Run multiple instances of Prophecy on the same computer.
- Multiple monitor support is included.

ARCHITECTURE

Prophecy's componentized architecture was designed to collect and aggregate data from multiple, dissimilar systems. Feedback from our industrial customers indicates that this is one of our most popular selling features. Prophecy allows you to manage your plant, not just an individual machine.



TECHNOLOGY

- Designed to work on modern, readily available hardware
- Easy backup and installation process
- Built on top of a real time, preemptive, deterministic operating system
- Supports all popular industrial networks including EthernetIP and Reliance Electric DCSNet
- Built on the non-proprietary Microsoft Visual Studio platform
- Includes engineered custom controls for Visual Studio to allow fast, easy configuration of any custom screen imaginable
- Fully supported product that is continuously being developed in the USA

AUTOMATION PARTNERS

SSDS
Southeast Drive Systems, Inc

Priority One
SOLUTIONS
Custom Software for Office & Industry

